

PRODUCT TECHNICAL DOSSIER

ROSEHIP POWDER (SUPER FINE POWDER)

Product Code:

P18058

Raw Material Full Name:

Rosehip Powder

Raw Material Full Botanical/Chemical/Latin/Trade Name/Synonyms:

Rosa Canina

This material is Food Grade:

Yes

Vegan / Vegetarian Status:

Suitable for Both

Means of Identification:

TLC

Ratio of Material:

The Ratio of Fresh Fruit to Powder is 5:1

Solubility in Water:

Insoluble

Solubility in Alcohol:

Insoluble

Particle Size:

80 Mesh

Percentage passed through:

Min 98%

Bulk Density:

0.30-0.60g/ml

Tapped Density:

0.40-0.70g/ml

Product Code: P18058

Version: 1



success starts with the finest ingredients...

Specific Gravity:

0.30-0.70g/ml

Loss on Drying:

Max 10%

Residue on Ignition:

Max 10%

Country of Origin:

China

Country of Origin of the Manufacture:

China

Base Source/Start Material:

Fruits of the Rosa Canina

Origin of Product – Synthetic, Plant, Mineral, Animal, Fish or Fermented:

Plant

Species used:

Rosa Canina

Part of the plant used:

Fruit

Material is:

100%

Compound Ingredients Origin, Function and Percentages:

None

Shelf Life from Date of Manufacture:

Min 2 Years

Storage Conditions:

This material is to be stored in a tightly sealed bag/container and to be kept in a cool place away from moisture and direct sunlight.

Appearance (Fine/Crystals/Crystalline/Hygroscopic):

Fine powder

Product Code: P18058

Version: 1



success starts with the finest ingredients...

Colour:

Brown Yellow (**)

Flavour/Taste:

Characteristic

Odour:

Characteristic

Do any of the parameters change in different seasons?

(**) **Yes** - Please note the colour of this natural material could be subject to slight change due to many factors such as seasonal variations.

Microbiological Test

Total Viable Count:

Max 10,000cfu/g

Yeast & Moulds:

Max 1,000cfu/g

E. coli:

Negative/10g

Salmonella:

Negative/25g

Heavy Metals

Lead (Pb):

Max 3ppm

Cadmium (Cd):

Max 1ppm

Mercury (Hg):

Max 0.1ppm

Arsenic (As):

Max 1ppm

Pharmacopeia Standard Used:

CP

Product Code: P18058

Version: 1



success starts with the finest ingredients...

Please note that surveillance testing may mean that not all the parameters stated on this specification are tested for every batch.

The allergen information is supplied by the manufacturer, we have not tested for each individual allergen to ensure they are not present. The information given is based on a documented risk assessment and is accurate to the best of our knowledge. If you intend to make a voluntary “free from” claim on your pack, additional testing may need to be carried out. For technical and labelling guidance you should always speak to the competent authority for the market or member state in which the final products are placed.

ALLERGENS	Product Contains YES/NO	Listed Item on Site at Manufacturer YES/NO	If YES, Please Comment
Peanuts and Peanut Derivatives (including possible cross contamination)	No	No	
Other Nut and Nut Derivatives <i>Almond (Amygdalus communis L.), Hazelnut (Corylus avellana), Walnut (Juglans regia), Cashew (Anacardium occidentale), Pecan nut (Carya illinoensis (Wangenh.) K. Koch), Brazil nut (Bertholletia excelsa), Pistachio nut (Pistacia vera), Macadamia nut and Queensland nut (Macadamia ternifolia)</i>	No	No	
Sesame Seeds and Sesame Seed Derivatives	No	No	
Other Seeds and Seed Derivatives (Poppy Seeds, Cotton Seeds, Sunflower Seeds)	No	No	
Milk and Milk Derivatives (including lactose)	No	No	
Egg and Egg Derivatives	No	No	
Cereals and Derivatives containing OR POTENTIALLY CONTAMINATED WITH Gluten (<i>wheat, wheatgrass, faro, freekeh, spelt, kamut, rye, oats, barley, barley grass</i>)	No	No	
Soya and Soya Derivatives	No	No	
Lupin and Lupin Derivatives	No	No	
Mustard and Mustard Derivatives	No	No	
Celery or Celery Derivatives (including Celeriac)	No	No	
Fish and Fish Derivatives	No	No	
Molluscs and their Derivatives	No	No	
Crustaceans and their Derivatives	No	No	
Sulphur Dioxide and Sulphites (E220, E228) at levels > 10mg/kg or 10mg/litre	No	No	

Product Code: P18058

Version: 1



success starts with the finest ingredients...

Registered Office: 203 Lancaster Way Business Park, Ely, Cambridgeshire, CB6 3NX, UK Registered in England No: 3590758 VAT No: GB 711 6598 32

ADDITIVES / CONTAMINANTS / DIETARY REQUIREMENTS	Product Contains YES/NO	Listed Item on Site at Manufacturer YES/NO	If YES, Please Comment
Additives	No	No	
Antioxidants	No	No	
Ethylene Oxide	No	No	
Gelatine	No	No	
Flavourings (Artificial / Nature Identical / Natural / Smoked)	No	No	
Maize / Corn and any Derivatives	No	Yes	Used as a Carrier for Other Products
Legumes / Pulses	No	No	
Rice and Rice Derivatives	No	No	
Added Salt	No	No	
Added Sugar / artificial or natural sweeteners	No	No	
Aspartame	No	No	
BHA / BHT (E320 / E321)	No	No	
Caffeine	No	No	
Colours (Artificial / Nature Identical / Natural / Smoked)	No	No	
Dextrose	No	No	
Dioxins	No	No	
MSG (Added and Naturally Occurring E621) or Glutamates (E620 to E625)	No	No	
Nucleotides (E627, E630, E631, E635)	No	No	
Polyols (sugar alcohols)	No	No	
Benzoates (E210 / E219)	No	No	
Sorbic Acid (E200, E203)	No	No	
Any other Preservatives	No	No	
Ethanol	No	Yes	Used as a Solvent for Other Products
Honey	No	No	
Lactose	No	No	
Yeast and Yeast Derivatives	No	No	
All Animal Products (Beef, Pork, Poultry or other) and Derivatives (which may include growth/yield hormones, antibiotics etc.)	No	No	
Bovine Products or Derivatives (which may include growth/yield hormones, antibiotics etc.)	No	No	

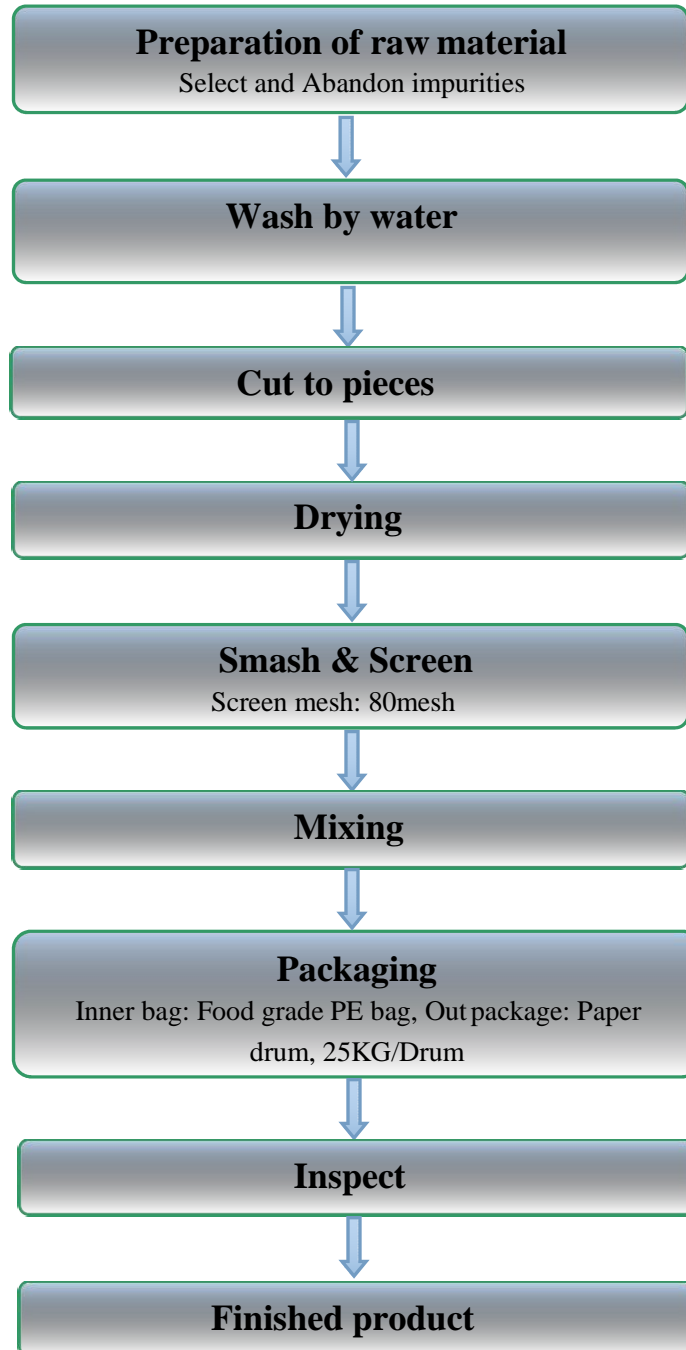
Product Code: P18058

Version: 1


success starts with the finest ingredients...

Registered Office: 203 Lancaster Way Business Park, Ely, Cambridgeshire, CB6 3NX, UK Registered in England No: 3590758 VAT No: GB 711 6598 32

PRODUCTION FLOW CHART



Product Code: P18058

Version: 1



success starts with the finest ingredients...

CONFIRMATION OF BSE/TSE STATUS

This is to certify that this product complies with all relevant current UK and EU Legislative requirements in regard to Transmissible Spongiform Encephalopathies (TSE) and Bovine Spongiform Encephalopathy (BSE) for human food, and so is free of TSE/BSE.

This is also to certify that, during the course of their manufacture, the above-mentioned product did not come into contact with any materials, which could be derived from TSE/BSE risk materials.

CONFIRMATION OF GM STATUS

This is to certify that this product is not manufactured from GM raw materials and is therefore not subject to labelling under regulations 1829/2003/EC and 1830/2003/EC.

CONFIRMATION OF NON IRRADIATION STATUS

This is to certify that this product, whole or in part, has not been subjected to Ionising Radiation as per European Directives 1999/3/EC.

CONFIRMATION OF NANDROLONE STATUS

This is to certify that this product, whole or in part, has not come into contact with Nandrolone or any of its precursors in any way.

CONFIRMATION OF IOC PRODUCT STATUS

This is to certify that this product, whole or in part, has not come into contact with any product/s, which is banned by the IOC (International Olympics Committee) and or WADA.

CONFIRMATION OF ANIMAL TESTING STATUS

This is to certify that all the products sold by Cambridge Commodities have not been tested on animals in any part of its manufacture in accordance with regulation 86/609/EEC.

CONFIRMATION OF PESTICIDES STATUS

This is to certify that the above-mentioned product complies with the regulation (EC) No.396/2005 of 23rd February 2005 and commission Regulation (EU) No. 559/2011 of 7th June 2011 amending annexes II and III of the above Regulation.

CONFIRMATION OF NANOPARTICLE STATUS

This is to certify that unless otherwise stated, the above-mentioned product is free of nanoparticles. Commission Recommendation 2011/696/EU, defines as follows: "'Nanomaterial' means a natural, incidental or manufactured material containing particles, in an unbound state or as an aggregate or as an agglomerate and where, for 50 % or more of the particles in the number size distribution, one or more external dimensions is in the size range 1 nm - 100 nm".

Product Code: P18058

Version: 1



success starts with the finest ingredients...

P18058 Rosehip powder

Cambridge Commodities

Chemwatch Hazard Alert Code: 0

Version No: 1.1

Issue Date: **14/05/2018**

Safety Data Sheet (Conforms to Regulation (EU) No 2015/830)

Print Date: **14/05/2018**

S.REACH.GBR.EN

SECTION 1 IDENTIFICATION OF THE SUBSTANCE / MIXTURE AND OF THE COMPANY / UNDERTAKING

1.1. Product Identifier

Product name	P18058 Rosehip powder
Synonyms	Not Available
Other means of identification	P18058
CAS number	Not Available

1.2. Relevant identified uses of the substance or mixture and uses advised against

Relevant identified uses	Use according to manufacturer's directions.
Uses advised against	Not Applicable

1.3. Details of the supplier of the safety data sheet

Registered company name	Cambridge Commodities
Address	Lancaster Way Business Park, Ely, Cambridgeshire Cambridgeshire CB6 3NX United Kingdom
Telephone	+44 1353 667258
Fax	Not Available
Website	Not Available
Email	Msd@cc-l.com

1.4. Emergency telephone number

Association / Organisation	Not Available
Emergency telephone numbers	Not Available
Other emergency telephone numbers	Not Available

SECTION 2 HAZARDS IDENTIFICATION

2.1. Classification of the substance or mixture

Classification according to regulation (EC) No 1272/2008 [CLP] ^[1]	Not Applicable
---	----------------

2.2. Label elements

Hazard pictogram(s)	Not Applicable
SIGNAL WORD	NOT APPLICABLE

Hazard statement(s)

Not Applicable

Supplementary statement(s)

Not Applicable

Precautionary statement(s) Prevention

Not Applicable

Precautionary statement(s) Response

Not Applicable

Precautionary statement(s) Storage

Not Applicable

Precautionary statement(s) Disposal

Not Applicable

2.3. Other hazards

REACH - Art.57-59: The mixture does not contain Substances of Very High Concern (SVHC) at the SDS print date.

SECTION 3 COMPOSITION / INFORMATION ON INGREDIENTS**3.1.Substances**

1.CAS No 2.EC No 3.Index No 4.REACH No	%[weight]	Name	Classification according to regulation (EC) No 1272/2008 [CLP]
1.Not Available 2.Not Available 3.Not Available 4.Not Available	100	<u>Rosehip Powder</u>	Not Applicable

Legend: 1. Classified by Chemwatch; 2. Classification drawn from EC Directive 67/548/EEC - Annex I ; 3. Classification drawn from EC Directive 1272/2008 - Annex VI 4. Classification drawn from C&L

3.2.Mixtures

See 'Information on ingredients' in section 3.1

SECTION 4 FIRST AID MEASURES**4.1. Description of first aid measures**

Eye Contact	▶ Generally not applicable.
Skin Contact	▶ Generally not applicable.
Inhalation	▶ Generally not applicable.
Ingestion	▶ Generally not applicable.

4.2 Most important symptoms and effects, both acute and delayed

See Section 11

4.3. Indication of any immediate medical attention and special treatment needed

Treat symptomatically.

SECTION 5 FIREFIGHTING MEASURES**5.1. Extinguishing media**

- ▶ There is no restriction on the type of extinguisher which may be used.
- ▶ Use extinguishing media suitable for surrounding area.

5.2. Special hazards arising from the substrate or mixture

Fire Incompatibility	None known.
-----------------------------	-------------

5.3. Advice for firefighters

Fire Fighting	Slight hazard when exposed to heat, flame and oxidisers.
Fire/Explosion Hazard	Articles and manufactured articles may constitute a fire hazard where polymers form their outer layers or where combustible packaging remains in place. Certain substances, found throughout their construction, may degrade or become volatile when heated to high temperatures. This may create a secondary hazard.

SECTION 6 ACCIDENTAL RELEASE MEASURES**6.1. Personal precautions, protective equipment and emergency procedures**

See section 8

6.2. Environmental precautions

See section 12

6.3. Methods and material for containment and cleaning up

Minor Spills	<ul style="list-style-type: none"> ▶ Clean up all spills immediately. ▶ Secure load if safe to do so. ▶ Bundle/collect recoverable product. ▶ Collect remaining material in containers with covers for disposal.
Major Spills	<ul style="list-style-type: none"> ▶ Minor hazard. ▶ Clear area of personnel. ▶ Alert Fire Brigade and tell them location and nature of hazard. ▶ Wear physical protective gloves e.g. Leather. ▶ Contain spill/secure load if safe to do so. ▶ Bundle/collect recoverable product and label for recycling. ▶ Collect remaining product and place in appropriate containers for disposal. ▶ Clean up/sweep up area. ▶ Water may be required.

6.4. Reference to other sections

Personal Protective Equipment advice is contained in Section 8 of the SDS.

SECTION 7 HANDLING AND STORAGE**7.1. Precautions for safe handling**

Safe handling	<ul style="list-style-type: none"> ▶ Limit all unnecessary personal contact. ▶ Wear protective clothing when risk of exposure occurs. ▶ Use in a well-ventilated area. ▶ Avoid contact with incompatible materials. ▶ When handling, DO NOT eat, drink or smoke. ▶ Keep containers securely sealed when not in use. ▶ Avoid physical damage to containers. ▶ Always wash hands with soap and water after handling. ▶ Work clothes should be laundered separately. ▶ Use good occupational work practice. ▶ Observe manufacturer's storage and handling recommendations contained within this SDS. ▶ Atmosphere should be regularly checked against established exposure standards to ensure safe working conditions are maintained.
Fire and explosion protection	See section 5
Other information	<ul style="list-style-type: none"> ▶ Store away from incompatible materials.

7.2. Conditions for safe storage, including any incompatibilities

Suitable container	Generally packaging as originally supplied with the article or manufactured item is sufficient to protect against physical hazards. If repackaging is required ensure the article is intact and does not show signs of wear. As far as is practically possible, reuse the original packaging or something providing a similar level of protection to both the article and the handler.
Storage incompatibility	Avoid contamination of water, foodstuffs, feed or seed. None known

7.3. Specific end use(s)

See section 1.2

SECTION 8 EXPOSURE CONTROLS / PERSONAL PROTECTION**8.1. Control parameters****DERIVED NO EFFECT LEVEL (DNEL)**

Not Available

PREDICTED NO EFFECT LEVEL (PNEC)

Not Available

OCCUPATIONAL EXPOSURE LIMITS (OEL)**INGREDIENT DATA**

Source	Ingredient	Material name	TWA	STEL	Peak	Notes
Not Available	Not Available	Not Available	Not Available	Not Available	Not Available	Not Available


EMERGENCY LIMITS

Ingredient	Material name	TEEL-1	TEEL-2	TEEL-3
P18058 Rosehip powder	Not Available	Not Available	Not Available	Not Available

Ingredient	Original IDLH	Revised IDLH
Rosehip Powder	Not Available	Not Available

8.2. Exposure controls

8.2.1. Appropriate engineering controls	Articles or manufactured items, in their original condition, generally don't require engineering controls during handling or in normal use. Exceptions may arise following extensive use and subsequent wear, during recycling or disposal operations where substances, found in the article, may be
--	--

	released to the environment.
8.2.2. Personal protection	
Eye and face protection	<ul style="list-style-type: none"> ▶ Safety glasses. ▶ Safety glasses with side shields. ▶ Chemical goggles. ▶ Contact lenses may pose a special hazard; soft contact lenses may absorb and concentrate irritants. A written policy document, describing the wearing of lenses or restrictions on use, should be created for each workplace or task. This should include a review of lens absorption and adsorption for the class of chemicals in use and an account of injury experience. Medical and first-aid personnel should be trained in their removal and suitable equipment should be readily available. In the event of chemical exposure, begin eye irrigation immediately and remove contact lens as soon as practicable. Lens should be removed at the first signs of eye redness or irritation - lens should be removed in a clean environment only after workers have washed hands thoroughly. [CDC NIOSH Current Intelligence Bulletin 59], [AS/NZS 1336 or national equivalent] <p>No special equipment for minor exposure i.e. when handling small quantities.</p> <p>OTHERWISE:</p> <ul style="list-style-type: none"> ▶ Safety glasses with side shields. ▶ Contact lenses may pose a special hazard; soft contact lenses may absorb and concentrate irritants. A written policy document, describing the wearing of lenses or restrictions on use, should be created for each workplace or task. This should include a review of lens absorption and adsorption for the class of chemicals in use and an account of injury experience. Medical and first-aid personnel should be trained in their removal and suitable equipment should be readily available. In the event of chemical exposure, begin eye irrigation immediately and remove contact lens as soon as practicable. Lens should be removed at the first signs of eye redness or irritation - lens should be removed in a clean environment only after workers have washed hands thoroughly. [CDC NIOSH Current Intelligence Bulletin 59], [AS/NZS 1336 or national equivalent] ▶ Safety glasses with side shields ▶ Chemical goggles. ▶ Contact lenses may pose a special hazard; soft contact lenses may absorb and concentrate irritants. A written policy document, describing the wearing of lenses or restrictions on use, should be created for each workplace or task. This should include a review of lens absorption and adsorption for the class of chemicals in use and an account of injury experience. Medical and first-aid personnel should be trained in their removal and suitable equipment should be readily available. In the event of chemical exposure, begin eye irrigation immediately and remove contact lens as soon as practicable. Lens should be removed at the first signs of eye redness or irritation - lens should be removed in a clean environment only after workers have washed hands thoroughly. [CDC NIOSH Current Intelligence Bulletin 59], [AS/NZS 1336 or national equivalent]
Skin protection	See Hand protection below
Hands/feet protection	Wear general protective gloves, eg. light weight rubber gloves.
Body protection	See Other protection below
Other protection	<p>No special equipment needed when handling small quantities.</p> <p>OTHERWISE:</p> <ul style="list-style-type: none"> ▶ Overalls. ▶ Barrier cream. ▶ Eyewash unit.

Respiratory protection

Respiratory protection not normally required due to the physical form of the product.

8.2.3. Environmental exposure controls

See section 12

SECTION 9 PHYSICAL AND CHEMICAL PROPERTIES**9.1. Information on basic physical and chemical properties**

Appearance	Not Available		
Physical state	article	Relative density (Water = 1)	Not Available
Odour	Not Available	Partition coefficient n-octanol / water	Not Available
Odour threshold	Not Available	Auto-ignition temperature (°C)	Not Available
pH (as supplied)	Not Available	Decomposition temperature	Not Available
Melting point / freezing point (°C)	Not Available	Viscosity (cSt)	Not Available
Initial boiling point and boiling range (°C)	Not Available	Molecular weight (g/mol)	Not Available
Flash point (°C)	Not Available	Taste	Not Available
Evaporation rate	Not Available	Explosive properties	Not Available
Flammability	Not Available	Oxidising properties	Not Available
Upper Explosive Limit (%)	Not Available	Surface Tension (dyn/cm or mN/m)	Not Available
Lower Explosive Limit (%)	Not Available	Volatile Component (%vol)	Not Available
Vapour pressure (kPa)	Not Available	Gas group	Not Available
Solubility in water (g/L)	Immiscible	pH as a solution (1%)	Not Available
Vapour density (Air = 1)	Not Available	VOC g/L	Not Available

9.2. Other information

Not Available

SECTION 10 STABILITY AND REACTIVITY

10.1. Reactivity	See section 7.2
10.2. Chemical stability	Product is considered stable and hazardous polymerisation will not occur.
10.3. Possibility of hazardous reactions	See section 7.2
10.4. Conditions to avoid	See section 7.2
10.5. Incompatible materials	See section 7.2
10.6. Hazardous decomposition products	See section 5.3

SECTION 11 TOXICOLOGICAL INFORMATION**11.1. Information on toxicological effects**

Inhaled	The material is not thought to produce adverse health effects or irritation of the respiratory tract (as classified by EC Directives using animal models). Nevertheless, good hygiene practice requires that exposure be kept to a minimum and that suitable control measures be used in an occupational setting.
Ingestion	The material has NOT been classified by EC Directives or other classification systems as "harmful by ingestion". This is because of the lack of corroborating animal or human evidence.
Skin Contact	The material is not thought to produce adverse health effects or skin irritation following contact (as classified by EC Directives using animal models). Nevertheless, good hygiene practice requires that exposure be kept to a minimum and that suitable gloves be used in an occupational setting.
Eye	Although the material is not thought to be an irritant (as classified by EC Directives), direct contact with the eye may produce transient discomfort characterised by tearing or conjunctival redness (as with windburn).
Chronic	Long-term exposure to the product is not thought to produce chronic effects adverse to the health (as classified by EC Directives using animal models); nevertheless exposure by all routes should be minimised as a matter of course.

P18058 Rosehip powder	TOXICITY	IRRITATION
	Not Available	Not Available
Rosehip Powder	TOXICITY	IRRITATION
	Not Available	Not Available
Legend:	1. Value obtained from Europe ECHA Registered Substances - Acute toxicity 2. * Value obtained from manufacturer's SDS. Unless otherwise specified data extracted from RTECS - Register of Toxic Effect of chemical Substances	

Acute Toxicity	☹	Carcinogenicity	☹
Skin Irritation/Corrosion	☹	Reproductivity	☹
Serious Eye Damage/Irritation	☹	STOT - Single Exposure	☹
Respiratory or Skin sensitisation	☹	STOT - Repeated Exposure	☹
Mutagenicity	☹	Aspiration Hazard	☹

Legend: ✘ - Data available but does not fill the criteria for classification
✔ - Data available to make classification
☹ - Data Not Available to make classification

SECTION 12 ECOLOGICAL INFORMATION**12.1. Toxicity**

P18058 Rosehip powder	ENDPOINT	TEST DURATION (HR)	SPECIES	VALUE	SOURCE
	Not Available	Not Available	Not Available	Not Available	Not Available
Rosehip Powder	ENDPOINT	TEST DURATION (HR)	SPECIES	VALUE	SOURCE
	Not Available	Not Available	Not Available	Not Available	Not Available

Legend: Extracted from 1. IUCLID Toxicity Data 2. Europe ECHA Registered Substances - Ecotoxicological Information - Aquatic Toxicity 3. EPIWIN Suite V3.12 (QSAR) - Aquatic Toxicity Data (Estimated) 4. US EPA, Ecotox database - Aquatic Toxicity Data 5. ECETOC Aquatic Hazard Assessment Data 6. NITE (Japan) - Bioconcentration Data 7. METI (Japan) - Bioconcentration Data 8. Vendor Data

12.2. Persistence and degradability

Ingredient	Persistence: Water/Soil	Persistence: Air
	No Data available for all ingredients	No Data available for all ingredients

12.3. Bioaccumulative potential

Ingredient	Bioaccumulation
	No Data available for all ingredients

12.4. Mobility in soil

Ingredient	Mobility
	No Data available for all ingredients

12.5. Results of PBT and vPvB assessment

	P	B	T
Relevant available data	Not Available	Not Available	Not Available
PBT Criteria fulfilled?	Not Available	Not Available	Not Available

12.6. Other adverse effects

No data available

SECTION 13 DISPOSAL CONSIDERATIONS**13.1. Waste treatment methods**

Product / Packaging disposal	<ul style="list-style-type: none"> Recycle wherever possible or consult manufacturer for recycling options. Consult State Land Waste Management Authority for disposal.
Waste treatment options	Not Available
Sewage disposal options	Not Available

SECTION 14 TRANSPORT INFORMATION**Labels Required**

Marine Pollutant	NO
HAZCHEM	Not Applicable

Land transport (DOT)**Land transport (DOT): NOT REGULATED FOR TRANSPORT OF DANGEROUS GOODS**

14.1. UN number	Not Applicable										
14.2. UN proper shipping name	Not Applicable										
14.3. Transport hazard class(es)	<table border="0"> <tr> <td>Class</td> <td>Not Applicable</td> </tr> <tr> <td>Subrisk</td> <td>Not Applicable</td> </tr> </table>	Class	Not Applicable	Subrisk	Not Applicable						
Class	Not Applicable										
Subrisk	Not Applicable										
14.4. Packing group	Not Applicable										
14.5. Environmental hazard	Not Applicable										
14.6. Special precautions for user	<table border="0"> <tr> <td>Hazard identification (Kemler)</td> <td>Not Applicable</td> </tr> <tr> <td>Classification code</td> <td>Not Applicable</td> </tr> <tr> <td>Hazard Label</td> <td>Not Applicable</td> </tr> <tr> <td>Special provisions</td> <td>Not Applicable</td> </tr> <tr> <td>Limited quantity</td> <td>Not Applicable</td> </tr> </table>	Hazard identification (Kemler)	Not Applicable	Classification code	Not Applicable	Hazard Label	Not Applicable	Special provisions	Not Applicable	Limited quantity	Not Applicable
Hazard identification (Kemler)	Not Applicable										
Classification code	Not Applicable										
Hazard Label	Not Applicable										
Special provisions	Not Applicable										
Limited quantity	Not Applicable										

Air transport (ICAO-IATA / DGR)**Air transport (ICAO-IATA / DGR): NOT REGULATED FOR TRANSPORT OF DANGEROUS GOODS**

14.1. UN number	Not Applicable						
14.2. UN proper shipping name	Not Applicable						
14.3. Transport hazard class(es)	<table border="0"> <tr> <td>ICAO/IATA Class</td> <td>Not Applicable</td> </tr> <tr> <td>ICAO / IATA Subrisk</td> <td>Not Applicable</td> </tr> <tr> <td>ERG Code</td> <td>Not Applicable</td> </tr> </table>	ICAO/IATA Class	Not Applicable	ICAO / IATA Subrisk	Not Applicable	ERG Code	Not Applicable
ICAO/IATA Class	Not Applicable						
ICAO / IATA Subrisk	Not Applicable						
ERG Code	Not Applicable						
14.4. Packing group	Not Applicable						
14.5. Environmental hazard	Not Applicable						
14.6. Special precautions for user	<table border="0"> <tr> <td>Special provisions</td> <td>Not Applicable</td> </tr> <tr> <td>Cargo Only Packing Instructions</td> <td>Not Applicable</td> </tr> </table>	Special provisions	Not Applicable	Cargo Only Packing Instructions	Not Applicable		
Special provisions	Not Applicable						
Cargo Only Packing Instructions	Not Applicable						

Cargo Only Maximum Qty / Pack	Not Applicable
Passenger and Cargo Packing Instructions	Not Applicable
Passenger and Cargo Maximum Qty / Pack	Not Applicable
Passenger and Cargo Limited Quantity Packing Instructions	Not Applicable
Passenger and Cargo Limited Maximum Qty / Pack	Not Applicable

Sea transport (IMDG-Code / GGVSee)**Sea transport (IMDG-Code / GGVSee): NOT REGULATED FOR TRANSPORT OF DANGEROUS GOODS**

14.1. UN number	Not Applicable
14.2. UN proper shipping name	Not Applicable
14.3. Transport hazard class(es)	IMDG Class : Not Applicable
	IMDG Subrisk : Not Applicable
14.4. Packing group	Not Applicable
14.5. Environmental hazard	Not Applicable
14.6. Special precautions for user	EMS Number : Not Applicable
	Special provisions : Not Applicable
	Limited Quantities : Not Applicable

Inland waterways transport (ADN)**Inland waterways transport (ADN) : NOT REGULATED FOR TRANSPORT OF DANGEROUS GOODS**

14.1. UN number	Not Applicable
14.2. UN proper shipping name	Not Applicable
14.3. Transport hazard class(es)	Not Applicable : Not Applicable
14.4. Packing group	Not Applicable
14.5. Environmental hazard	Not Applicable
14.6. Special precautions for user	Classification code : Not Applicable
	Special provisions : Not Applicable
	Limited quantity : Not Applicable
	Equipment required : Not Applicable
	Fire cones number : Not Applicable

14.7. Transport in bulk according to Annex II of MARPOL and the IBC code

Not Applicable

SECTION 15 REGULATORY INFORMATION**15.1. Safety, health and environmental regulations / legislation specific for the substance or mixture****ROSEHIP POWDER(NOT AVAILABLE) IS FOUND ON THE FOLLOWING REGULATORY LISTS**

Not Applicable

This safety data sheet is in compliance with the following EU legislation and its adaptations - as far as applicable - : Directives 98/24/EC, - 92/85/EEC, - 94/33/EC, - 2008/98/EC, - 2010/75/EU; Commission Regulation (EU) 2015/830; Regulation (EC) No 1272/2008 as updated through ATPs.

15.2. Chemical safety assessment

For further information please look at the Chemical Safety Assessment and Exposure Scenarios prepared by your Supply Chain if available.

ECHA SUMMARY

Not Applicable

National Inventory	Status
Australia - AICS	Y
Canada - DSL	Y
Canada - NDSL	Y
China - IECSC	Y
Europe - EINEC / ELINCS / NLP	Y
Japan - ENCS	Y
Korea - KECI	Y
New Zealand - NZIoC	Y

Philippines - PICCS	Y
USA - TSCA	Y
Legend:	Y = All ingredients are on the inventory N = Not determined or one or more ingredients are not on the inventory and are not exempt from listing(see specific ingredients in brackets)

SECTION 16 OTHER INFORMATION

Revision Date	14/05/2018
Initial Date	14/05/2018

Full text Risk and Hazard codes

Other information

Classification of the preparation and its individual components has drawn on official and authoritative sources as well as independent review by the Chemwatch Classification committee using available literature references.

The SDS is a Hazard Communication tool and should be used to assist in the Risk Assessment. Many factors determine whether the reported Hazards are Risks in the workplace or other settings. Risks may be determined by reference to Exposures Scenarios. Scale of use, frequency of use and current or available engineering controls must be considered.

For detailed advice on Personal Protective Equipment, refer to the following EU CEN Standards:

EN 166 Personal eye-protection

EN 340 Protective clothing

EN 374 Protective gloves against chemicals and micro-organisms

EN 13832 Footwear protecting against chemicals

EN 133 Respiratory protective devices

Definitions and abbreviations

PC—TWA: Permissible Concentration-Time Weighted Average

PC—STEL: Permissible Concentration-Short Term Exposure Limit

IARC: International Agency for Research on Cancer

ACGIH: American Conference of Governmental Industrial Hygienists

STEL: Short Term Exposure Limit

TEEL: Temporary Emergency Exposure Limit,

IDLH: Immediately Dangerous to Life or Health Concentrations

OSF: Odour Safety Factor

NOAEL: No Observed Adverse Effect Level

LOAEL: Lowest Observed Adverse Effect Level

TLV: Threshold Limit Value

LOD: Limit Of Detection

OTV: Odour Threshold Value

BCF: BioConcentration Factors

BEI: Biological Exposure Index

Powered by AuthorTe, from Chemwatch.



The Information provided in this document is subject to change and the batch specific certificate of analysis should always be referenced.

To be used as per local legislation.

Change History

Version	Change	Customer Notification required Yes / No
1	First Issue	N/A

Document Approval

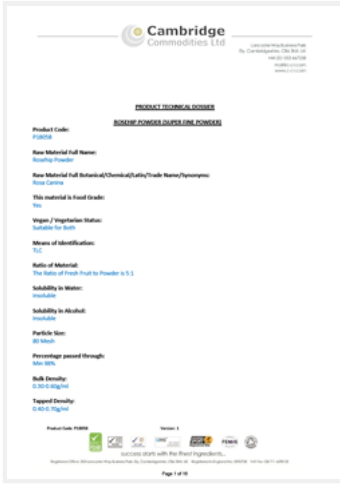
Originator Job Title	QC Technician	Approver Job Title	Quality Specialist
 Malgorzata Sosnin (May 16, 2018)		 Shannon McKenna (May 16, 2018)	

Product Code: P18058

Version: 1



success starts with the finest ingredients...








P18058-Rosehip Powder-Technical Dossier

Adobe Sign Document History

05/16/2018

Created:	05/16/2018
By:	Malgorzata Sosnin (malgorzata.sosnin@c-c-l.com)
Status:	Signed
Transaction ID:	CBJCHBCAABAAb1D7Wz2oloI0otIHyaRE2Oe4n5IGh02b

"P18058-Rosehip Powder-Technical Dossier" History

-  Document uploaded by Malgorzata Sosnin (malgorzata.sosnin@c-c-l.com) from Acrobat
05/16/2018 - 6:15:40 AM PDT- IP address: 81.145.42.226
-  Document e-signed by Malgorzata Sosnin (malgorzata.sosnin@c-c-l.com)
Signature Date: 05/16/2018 - 6:16:24 AM PDT - Time Source: server- IP address: 81.145.42.226
-  Document emailed to Shannon McKenna (shannon.mckenna@c-c-l.com) for signature
05/16/2018 - 6:16:24 AM PDT
-  Document viewed by Shannon McKenna (shannon.mckenna@c-c-l.com)
05/16/2018 - 6:16:46 AM PDT- IP address: 81.145.42.226
-  Document e-signed by Shannon McKenna (shannon.mckenna@c-c-l.com)
Signature Date: 05/16/2018 - 6:17:31 AM PDT - Time Source: server- IP address: 81.145.42.226