

### Product Technical Dossier

Product	Micro Crystalline Cellulose (MCC) 102 Bulk Dried
CCL Product Code	P13853

#### Specification Details

	Specification
Identification	1.The substance takes on a violet - blue colour. 2.The degree of Polymerisation should not be more than 350
Assay	97.0 – 102.0%
Appearance	Powder consisting of free flowing, non-fibrous particles
Colour	White or almost white
Aroma	Characteristic
Flavour	Characteristic
Sieve Analysis % passed	+60 Mesh – 8% Max, +200 Mesh – 45% Min
Loss on Drying	Max 7%
Ash	Max 0.1%
Bulk Density	0.28 – 0.34 g/cc
pH	5.0 – 7.5

#### Microbiological Limits

Total Viable Count	1,000cfu/g
Yeasts & Moulds	100cfu/g
E. Coli	Absent in 1g
Salmonella	Absent in 10g
Staphylococcus aureus	Absent in 1g
Pseudomonas aeruginosa	Absent in 1g

#### Heavy Metal Limits

Total Heavy metals	Max 10ppm
Lead (Pb)	Max 2ppm
Cadmium (Cd)	Max 1ppm
Mercury (Hg)	Max 0.1ppm
Arsenic (As)	Max 1ppm

Product Code: P13853

Version: 1

Page 1 of 6



FDA number: 16806073982

 +44 (0) 1353 667258 | [www.c-c-l.com](http://www.c-c-l.com) | [info@c-c-l.com](mailto:info@c-c-l.com)

Registered in England No: 3590758 VAT No: GB 711 6598 32

Registered office: 203 Lancaster Way Business Park, Ely, Cambridgeshire, CB6 3NX, UK.

## Additional Technical Information

Raw Material Full Botanical / Chemical Name	Plant - Pine ( <i>Pinus densiflora</i> ) Oak ( <i>Quercus acutissima</i> )
The material is Food Grade	Yes
Ratio of Material	100%
Country of Origin	India
Country of Manufacture	India
Melting Point	Charred at 268-270°C
Solubility in Alcohol	Practically insoluble in sodium hydroxide solution (1 in 20); insoluble in water; in dilute acids and in most-organic solvents
Solubility in Water	insoluble in water
Molecular Formula	[C <sub>6</sub> H <sub>10</sub> O <sub>5</sub> ] <sub>n</sub>
CAS Number	9004-34-6
EC/EINECS Number	232-674-9
Shelf Life from Date of Manufacture	5 years
Suitable for Vegetarians?	Yes
Suitable for Vegans?	Yes
Storage Conditions	This material is to be stored in a tightly sealed bag/container and to be kept in a cool place away from moisture and direct sunlight.

## Composition Origin, Function and Percentages

Ingredients	Function	% composition	Source
Wood Pulp	Key Raw Material	100%	Plant - Pine ( <i>Pinus densiflora</i> ) Oak ( <i>Quercus acutissima</i> )

Please note that surveillance testing may mean that not all the parameters stated on this specification are tested for every batch.

The allergen information is supplied by the manufacturer, we have not tested for each individual allergen to ensure they are not present. The information given is based on a documented risk assessment and is accurate to the best of our knowledge. If you intend to make a voluntary "free from" claim on your pack, additional testing may need to be carried out. For technical and labelling guidance, you should always speak to the competent authority for the market or member state in which the final products are placed.

Product Code: P13853

Version: 1

Page 2 of 6



FDA number: 16806073982

+44 (0) 1353 667258 | [www.c-c-l.com](http://www.c-c-l.com) | [info@c-c-l.com](mailto:info@c-c-l.com)

Allergens	Product Contains YES/NO	Listed Item on Site at Manufacturer YES/NO	Where applicable, is there risk of cross-contamination? YES/NO or N/A
Peanuts and Peanut Derivatives (including possible cross contamination)	NO	NO	N/A
Nut and Nut Derivatives <i>Almond (Amygdalus communis L.), Hazelnut (Corylus avellana), Walnut (Juglans regia), Cashew (Anacardium occidentale), Pecan nut (Carya illinoensis (Wangenh.) K. Koch), Brazil nut (Bertholletia excelsa), Pistachio nut (Pistacia vera), Macadamia nut and Queensland nut (Macadamia ternifolia)</i>	NO	NO	N/A
Sesame Seeds and Sesame Seed Derivatives	NO	NO	N/A
Milk and Milk Derivatives (including lactose)	NO	NO	N/A
Egg and Egg Derivatives	NO	NO	N/A
Cereals and Derivatives containing OR POTENTIALLY CONTAMINATED WITH Gluten <i>(wheat, wheatgrass, faro, freekeh, spelt, kamut, rye, oats, barley, barley grass)</i>	NO	NO	N/A
Soya and Soya Derivatives	NO	NO	N/A
Lupin and Lupin Derivatives	NO	NO	N/A
Mustard and Mustard Derivatives	NO	NO	N/A
Celery or Celery Derivatives (including Celeriac)	NO	NO	N/A
Fish and Fish Derivatives	NO	NO	N/A
Molluscs and their Derivatives	NO	NO	N/A
Crustaceans and their Derivatives	NO	NO	N/A
Sulphur Dioxide and Sulphites (E220, E228) at levels > 10mg/kg or 10mg/litre	NO	NO	N/A

Additives / Contaminants / Dietary Requirements / Intolerances	Product Contains YES/NO	Listed Item on Site at Manufacturer YES/NO	Where applicable, is there risk of cross-contamination? YES/NO or N/A
Additives / E Numbers	Yes	Yes	E 460 I
Antioxidants	NO	NO	N/A
Ethylene Oxide	NO	NO	N/A
Gelatine	NO	NO	N/A
Flavourings (Artificial / Nature Identical / Natural / Smoked)	NO	NO	N/A
Maize / Corn and any Derivatives	NO	NO	N/A
Legumes / Pulses	NO	NO	N/A
Rice and Rice Derivatives	NO	NO	N/A
Added Salt	NO	NO	N/A
Added Sugar / artificial or natural sweeteners	NO	NO	N/A
Aspartame	NO	NO	N/A
BHA / BHT (E320 / E321)	NO	NO	N/A
Caffeine	NO	NO	N/A
Colours (Artificial / Nature Identical / Natural / Smoked)	NO	NO	N/A
Dextrose	NO	NO	N/A
other Seeds and Seed Derivatives (Poppy Seeds, Cotton Seeds, Sunflower Seeds)	NO	NO	N/A
Kiwi fruit	NO	NO	N/A
Polyols (sugar alcohols)	NO	NO	N/A
Grapefruit	NO	NO	N/A
Sorbic Acid (E200, E203)	NO	NO	N/A
Any other Preservatives	NO	NO	N/A
Ethanol	NO	NO	N/A
Honey	NO	NO	N/A
Lactose	NO	NO	N/A
Yeast and Yeast Derivatives	NO	NO	N/A
All Animal Products (Beef, Pork, Poultry or other) and Derivatives (which may include growth/yield hormones, antibiotics etc.)	NO	NO	N/A
Bovine Products or Derivatives (which may include growth/yield hormones, antibiotics etc.)	NO	NO	N/A

Product Code: P13853

Version: 1

Page 3 of 6



FDA number: 16806073982

+44 (0) 1353 667258 | [www.c-c-l.com](http://www.c-c-l.com) | [info@c-c-l.com](mailto:info@c-c-l.com)

Registered in England No: 3590758 VAT No: GB 711 6598 32

Registered office: 203 Lancaster Way Business Park, Ely, Cambridgeshire, CB6 3NX, UK.

## Statements

<p><b>Confirmation of BSE / TSE Status</b> This is to certify that this product complies with all relevant current UK and EU Legislative requirements in regard to Transmissible Spongiform Encephalopathies (TSE) and Bovine Spongiform Encephalopathy (BSE) for human food, and so is free of TSE/BSE.</p>	YES
<p>This is also to certify that, during the course of their manufacture, the above-mentioned product did not come into contact with any materials, which could be derived from TSE/BSE risk materials.</p>	YES
<p><b>Confirmation of GM Status</b> This is to certify that this product is not manufactured from GM raw materials and is therefore not subject to labelling under current regulations.</p>	YES
<p><b>Confirmation of Non-Irradiation Status</b> This is to certify that this product, whole or in part, has not been subjected to Ionising Radiation as per European Directives.</p>	YES
<p><b>Confirmation of Nandrolone Status</b> This is to certify that this product, whole or in part, has not come into contact with Nandrolone or any of its precursors in any way.</p>	YES
<p><b>Confirmation of IOC Product Status</b> This is to certify that this product, whole or in part, has not come into contact with any product/s, which is banned by the IOC (International Olympics Committee) and or WADA.</p>	YES
<p><b>Confirmation of Animal Testing Status</b> This is to certify that all the products sold by Cambridge Commodities have not been tested on animals in any part of its manufacture in accordance with current regulations.</p>	YES
<p><b>Confirmation of Pesticides Status</b> This is to certify that the above-mentioned product complies with the EU max residue limits (MRLs) on pesticides.</p>	YES
<p><b>Confirmation of Nanoparticles Status</b> This is to certify that unless otherwise stated, the above-mentioned product is free of nanoparticles. Commission Recommendation, defines as follows: "'Nanomaterial' means a natural, incidental or manufactured material containing particles, in an unbound state or as an aggregate or as an agglomerate and where, for 50 % or more of the particles in the number size distribution, one or more external dimensions is in the size range 1 nm - 100 nm".</p>	YES
<p><b>Packaging Status</b> We hereby certify that the packaging used in the above-mentioned material conforms to EU regulations and subsequent amendments on food grade packaging</p>	YES
<p><b>Confirmation of PAH status</b> This is to certify that the above-mentioned product complies with the max PAH limits set by the EU regulations</p>	YES

Product Code: P13853

Version: 1

Page 4 of 6



FDA number: 16806073982

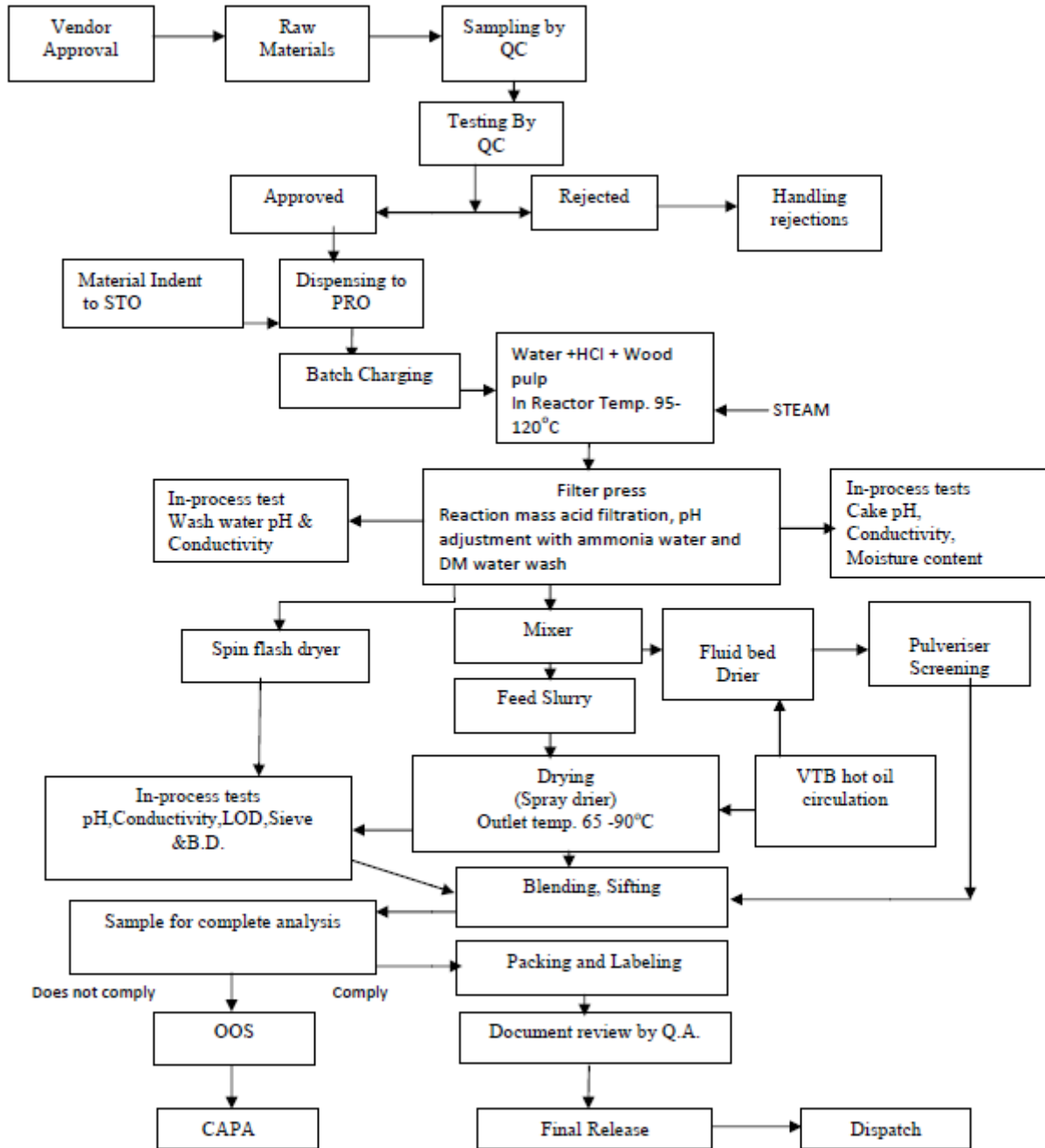
+44 (0) 1353 667258 | [www.c-c-l.com](http://www.c-c-l.com) | [info@c-c-l.com](mailto:info@c-c-l.com)

Registered in England No: 3590758 VAT No: GB 711 6598 32

Registered office: 203 Lancaster Way Business Park, Ely, Cambridgeshire, CB6 3NX, UK.

## Product Flow Chart

### MICROCRYSTALLINE CELLULOSE PROCESS FLOW CHART



## Material Safety Data Sheet

To download this product's material safety data sheet, please click [here](#) and search for the Cambridge Commodities product code. If there is no MSDS available, please follow the on-screen instructions to request one.

The Information provided in this document is subject to change and the batch specific certificate of analysis should always be referenced.

To be used as per local legislation.

### Change History

Version	Change	Customer Notification required Yes / No
1	First Issue	N/A

### Document Approval

Originator	Approver
 Alan Feetham QC Technician	 Shannon McKenna Assistant Quality Manager
<small>X</small> 22/06/2020 10:43	<small>X</small> 22/06/2020 11:50

Product Code: P13853

Version: 1

Page 6 of 6



FDA number: 16806073982

+44 (0) 1353 667258 | [www.c-c-l.com](http://www.c-c-l.com) | [info@c-c-l.com](mailto:info@c-c-l.com)

Registered in England No: 3590758 VAT No: GB 711 6598 32

Registered office: 203 Lancaster Way Business Park, Ely, Cambridgeshire, CB6 3NX, UK.