

Product Technical Dossier

Product	IMOfibe Syrup
CCL Product Code	P11807

Specification Details

	Specification	Method
Assay/Actives	Isomaltose + DP3 to DP9 (Dry basis) Min 90 %	
	Glucose Max 5%	
	Solid substance Min 75%	
Appearance	Syrup	
Colour	Colourless	
Aroma	Characteristic	
Flavour	Sweet	
Ash	Max 0.3%	
pH	4 - 6	
Impurities/Residual Solvents	No Visible Impurities	

Microbiological Limits

Total Viable Count	Max 1,000cfu/g	
Yeasts & Moulds	Max 100cfu/g	
E. Coli	Negative	
Salmonella	Negative	

Heavy Metal Limits

Lead (Pb)	Max 0.5 ppm	
Arsenic (As)	Max 0.5 ppm	
Cadmium (Cd)	Max 0.5ppm	
Mercury (Hg)	Max 0.5ppm	



Additional Technical Information

Raw Material Full Botanical / Chemical Name	Isomalto-oligosaccharide
The material is Food Grade	Yes
Country of Origin	China
Country of Manufacture	China
Solubility in Water	>99%
Molecular Formula	C ₁₂ H ₂₂ O ₁₁
CAS Number	499-40-1
Tariff Code	1702900090
Shelf Life from Date of	Min 1 Year
Suitable for Vegetarians?	Yes
Suitable for Vegans?	Yes
Storage Conditions	This material is to be stored in a tightly sealed bag/container and to be kept in a cool place away from moisture and direct sunlight.

Composition Origin, Function and Percentages

Ingredients	Function	% composition	Source
Isomalto-oligosaccharide	Food ingredient	100%	Tapioca starch

Please note that surveillance testing may mean that not all the parameters stated on this specification are tested for every batch.

The allergen information is supplied by the manufacturer, we have not tested for each individual allergen to ensure they are not present. The information given is based on a documented risk assessment and is accurate to the best of our knowledge. If you intend to make a voluntary “free from” claim on your pack, additional testing may need to be carried out. For technical and labelling guidance you should always speak to the competent authority for the market or member state in which the final products are placed.

Product Code: P11807

Version: 3

Page 2 of 6



FDA number: 16806073982

Allergens	Product Contains YES/NO	Listed Item on Site at Manufacturer YES/NO	Where applicable, is there risk of cross-contamination? YES/NO or N/A
Peanuts and Peanut Derivatives (including possible cross contamination)	No	No	No
Nut and Nut Derivatives <i>Almond (Amygdalus communis L.), Hazelnut (Corylus avellana), Walnut (Juglans regia), Cashew (Anacardium occidentale), Pecan nut (Carya illinoensis (Wangenh.) K. Koch), Brazil nut (Bertholletia excelsa), Pistachio nut (Pistacia vera), Macadamia nut and Queensland nut (Macadamia ternifolia)</i>	No	No	No
Sesame Seeds and Sesame Seed Derivatives	No	No	No
Milk and Milk Derivatives (including lactose)	No	No	No
Egg and Egg Derivatives	No	No	No
Cereals and Derivatives containing OR POTENTIALLY CONTAMINATED WITH Gluten <i>(wheat, wheatgrass, fano, freekeh, spelt, kamut, rye, oats, barley, barley grass)</i>	No	No	No
Soya and Soya Derivatives	No	No	No
Lupin and Lupin Derivatives	No	No	No
Mustard and Mustard Derivatives	No	No	No
Celery or Celery Derivatives (including Celeriac)	No	No	No
Fish and Fish Derivatives	No	No	No
Molluscs and their Derivatives	No	No	No
Crustaceans and their Derivatives	No	No	No
Sulphur Dioxide and Sulphites (E220, E228) at levels > 10mg/kg or 10mg/litre	No	No	No

Additives / Contaminants / Dietary Requirements / Intolerances	Product Contains YES/NO	Listed Item on Site at Manufacturer YES/NO	Where applicable, is there risk of cross-contamination? YES/NO or N/A
Additives / E Numbers	No	No	No
Antioxidants	No	No	No
Ethylene Oxide	No	No	No
Gelatine	No	No	No
Flavourings (Artificial / Nature Identical / Natural / Smoked)	No	No	No
Maize / Corn and any Derivatives	No	No	No
Legumes / Pulses	No	No	No
Rice and Rice Derivatives	No	No	No
Added Salt	No	No	No
Added Sugar / artificial or natural sweeteners	No	No	No
Aspartame	No	No	No
BHA / BHT (E320 / E321)	No	No	No
Caffeine	No	No	No
Colours (Artificial / Nature Identical / Natural / Smoked)	No	No	No
Dextrose	No	No	No
other Seeds and Seed Derivatives (Poppy Seeds, Cotton Seeds, Sunflower Seeds)	No	No	No
Kiwi fruit	No	No	No
Polyols (sugar alcohols)	No	No	No
grape fruit	No	No	No
Sorbic Acid (E200, E203)	No	No	No
Any other Preservatives	No	No	No
Ethanol	No	No	No
Honey	No	No	No
Lactose	No	No	No
Yeast and Yeast Derivatives	No	No	No
All Animal Products (Beef, Pork, Poultry or other) and Derivatives (which may include growth/yield hormones, antibiotics etc.)	No	No	No
Bovine Products or Derivatives (which may include growth/yield hormones, antibiotics etc.)	No	No	No



Statements

<p>Confirmation of BSE / TSE Status This is to certify that this product complies with all relevant current UK and EU Legislative requirements in regard to Transmissible Spongiform Encephalopathies (TSE) and Bovine Spongiform Encephalopathy (BSE) for human food, and so is free of TSE/BSE.</p>	Yes
<p>This is also to certify that, during the course of their manufacture, the above-mentioned product did not come into contact with any materials, which could be derived from TSE/BSE risk materials.</p>	Yes
<p>Confirmation of GM Status This is to certify that this product is not manufactured from GM raw materials and is therefore not subject to labelling under current regulations.</p>	Yes
<p>Confirmation of Non-Irradiation Status This is to certify that this product, whole or in part, has not been subjected to Ionising Radiation as per European Directives.</p>	Yes
<p>Confirmation of Nandrolone Status This is to certify that this product, whole or in part, has not come into contact with Nandrolone or any of its precursors in any way.</p>	Yes
<p>Confirmation of IOC Product Status This is to certify that this product, whole or in part, has not come into contact with any product/s, which is banned by the IOC (International Olympics Committee) and or WADA.</p>	Yes
<p>Confirmation of Animal Testing Status This is to certify that all the products sold by Cambridge Commodities have not been tested on animals in any part of its manufacture in accordance with current regulations.</p>	Yes
<p>Confirmation of Pesticides Status This is to certify that the above-mentioned product complies with the EU max residue limits (MRLs) on pesticides.</p>	Yes
<p>Confirmation of Nanoparticles Status This is to certify that unless otherwise stated, the above-mentioned product is free of nanoparticles. Commission Recommendation, defines as follows: "Nanomaterial" means a natural, incidental or manufactured material containing particles, in an unbound state or as an aggregate or as an agglomerate and where, for 50 % or more of the particles in the number size distribution, one or more external dimensions is in the size range 1 nm - 100 nm".</p>	Yes
<p>Packaging Status We hereby certify that the packaging used in the above-mentioned material conforms to EU regulations and subsequent amendments on food grade packaging</p>	Yes
<p>Confirmation of PAH status This is to certify that the above-mentioned product complies with the max PAH limits set by the EU regulations</p>	Yes

Product Code: P11807

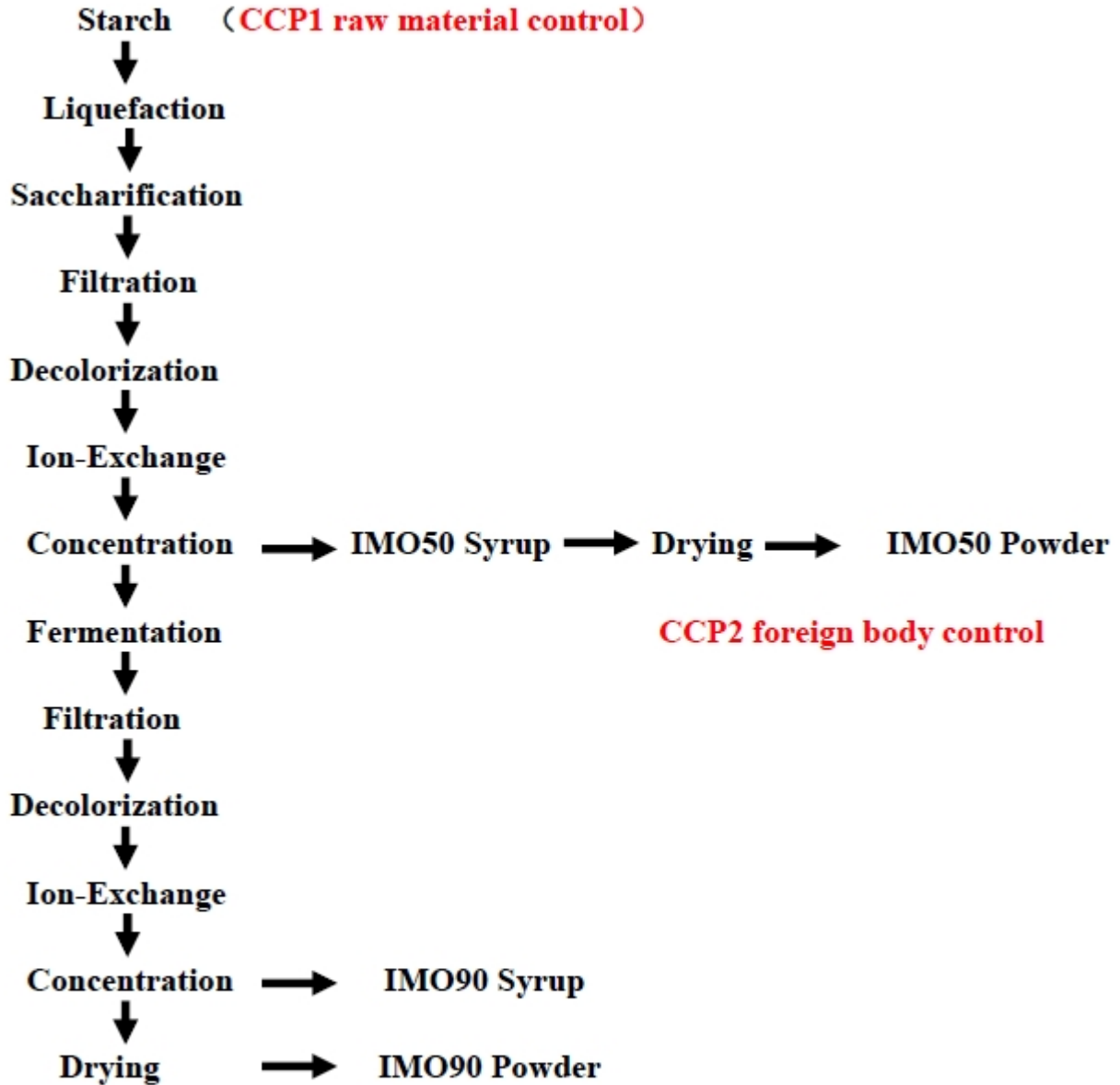
Version: 3

Page 4 of 6



FDA number: 16806073982

Product Flow Chart



CCP2 foreign body control

CCP2 foreign body control

(Metal detect: iron <1.0mm; non FE <1.2mm; stainless<1.5mm)



Material Safety Data Sheet

To download this product's material safety data sheet, please click [here](#) and search for the Cambridge Commodities product code. If there is no MSDS available, please follow the on-screen instructions to request one.

The Information provided in this document is subject to change and the batch specific certificate of analysis should always be referenced.

To be used as per local legislation.

Change History

Version	Change	Customer Notification required Yes / No
1	First Issue	N/A
2	Amended product name.	No
3	Removed the nutritional information and an MSDS, both are now available separately	Yes

Document Approval

Originator	Approver

Product Code: P11807

Version: 3

Page 6 of 6



FDA number: 16806073982