

## Product Technical Dossier

Product	D-Glucosamine HCL
CCL Product Code	P0716

### Specification Details

Means of Identification	Positive
Assay/Actives	Glucosamine HCL 98.0-102.0% Glucosamine content min 83.0%.
Appearance	Crystalline powder
Colour	White to off-white
Aroma	Characteristic
Flavour	Characteristic
Sieve Analysis % passed	100% Pass 40 Mesh
Loss on Drying	Max 1%
Ash	Max 0.1%
Bulk Density	Min 0.70g/ml
Tapped Density	Min 0.81g/ml
pH	3.0-5.0
Specific Gravity	+70.0°-+73.0°
Organic Volatile Impurities	Meet USP requirements
Chloride	16.2%-16.7%

### Microbiological Limits

Total Viable Count	Max 1,000cfu/g
Yeasts & Moulds	Max 100cfu/g
E. Coli	Negative/1g
Salmonella	Negative/10g

### Heavy Metal Limits

Total Heavy metals	Max 10 ppm
Lead (Pb)	Max 3ppm
Cadmium (Cd)	Max 1ppm
Mercury (Hg)	Max 0.1ppm
Arsenic (As)	Max 1ppm

Product Code: P0716

Version: 6

Page 1 of 6



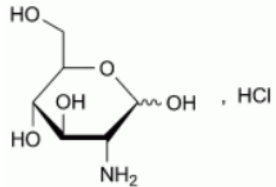
FDA number: 16806073982

+44 (0) 1353 667258 | [www.c-c-l.com](http://www.c-c-l.com) | [info@c-c-l.com](mailto:info@c-c-l.com)

Registered in England No: 3590758 VAT No: GB 711 6598 32

Registered office: 203 Lancaster Way Business Park, Ely, Cambridgeshire, CB6 3NX, UK.

## Additional Technical Information

Raw Material Full Botanical / Chemical Name	2-Amino-2-deoxy-β-D-Glucan-Hydrochloride
Part Used	Crab/shrimp shell
The material is Food Grade	Yes
FEMAS Assured	Yes
Solvent used	Ethanol
Harvest Method	Manual
Country of Origin	China
Country of Manufacture	China
Solubility in Alcohol	Insoluble in Alcohol
Solubility in Water	Soluble in water
Average Molecular weight	215.64
Molecular Formula	$C_6H_{13}NO_5 \cdot HCl$
Molecular Structure (image)	
CAS Number	66-84-2
EC/EINECS Number	200-638-1
Shelf Life from Date of Manufacture	Min 2 years
Pharmacopeia Standard Used	USP
Suitable for Vegetarians?	NO
Suitable for Vegans?	NO
Storage Conditions	This Material is to be stored in a tightly sealed bag/container and to be kept in a cool place away from moisture and direct sunlight

## Composition Origin, Function and Percentages

Ingredients	Function	% composition	Source
Glucosamine HCL		100%	Crab/shrimp shell

Please note that surveillance testing may mean that not all the parameters stated on this specification are tested for every batch.

The allergen information is supplied by the manufacturer, we have not tested for each individual allergen to ensure they are not present. The information given is based on a documented risk assessment and is accurate to the best of our knowledge. If you intend to make a voluntary "free from" claim on your pack, additional testing may need to be carried out. For technical and labelling guidance, you should always speak to the competent authority for the market or member state in which the final products are placed.

Product Code: P0716

Version: 6

Page 2 of 6



FDA number: 16806073982

+44 (0) 1353 667258 | [www.c-c-l.com](http://www.c-c-l.com) | [info@c-c-l.com](mailto:info@c-c-l.com)

Registered in England No: 3590758 VAT No: GB 711 6598 32

Registered office: 203 Lancaster Way Business Park, Ely, Cambridgeshire, CB6 3NX, UK.

Allergens	Product Contains YES/NO	Listed Item on Site at Manufacturer YES/NO	Where applicable, is there risk of cross-contamination? YES/NO or N/A
Peanuts and Peanut Derivatives (including possible cross contamination)	No	No	N/A
Nut and Nut Derivatives Almond ( <i>Amygdalus communis</i> L.), Hazelnut ( <i>Corylus avellana</i> ), Walnut ( <i>Juglans regia</i> ), Cashew ( <i>Anacardium occidentale</i> ), Pecan nut ( <i>Carya illinoensis</i> (Wangenh.) K. Koch), Brazil nut ( <i>Bertholletia excelsa</i> ), Pistachio nut ( <i>Pistacia vera</i> ), Macadamia nut and Queensland nut ( <i>Macadamia ternifolia</i> )	No	No	N/A
Sesame Seeds and Sesame Seed Derivatives	No	No	N/A
Milk and Milk Derivatives (including lactose)	No	No	N/A
Egg and Egg Derivatives	No	No	N/A
Cereals and Derivatives containing OR POTENTIALLY CONTAMINATED WITH Gluten (wheat, wheatgrass, faro, freekeh, spelt, kamut, rye, oats, barley, barley grass)	No	No	N/A
Soya and Soya Derivatives	No	No	N/A
Lupin and Lupin Derivatives	No	No	N/A
Mustard and Mustard Derivatives	No	No	N/A
Celery or Celery Derivatives (including Celeriac)	No	No	N/A
Fish and Fish Derivatives	No	No	N/A
Molluscs and their Derivatives	No	No	N/A
Crustaceans and their Derivatives	Yes	Yes	Yes
Sulphur Dioxide and Sulphites (E220, E228) at levels > 10mg/kg or 10mg/litre	No	No	N/A

Additives / Contaminants / Dietary Requirements / Intolerances	Product Contains YES/NO	Listed Item on Site at Manufacturer YES/NO	Where applicable, is there risk of cross-contamination? YES/NO or N/A
Additives / E Numbers	No	No	N/A
Antioxidants	No	No	N/A
Ethylene Oxide	No	No	N/A
Gelatine	No	No	N/A
Flavourings (Artificial / Nature Identical / Natural / Smoked)	No	No	N/A
Maize / Corn and any Derivatives	No	No	N/A
Legumes / Pulses	No	No	N/A
Rice and Rice Derivatives	No	No	N/A
Added Salt	No	No	N/A
Added Sugar / artificial or natural sweeteners	No	No	N/A
Aspartame	No	No	N/A
BHA / BHT (E320 / E321)	No	No	N/A
Caffeine	No	No	N/A
Colours (Artificial / Nature Identical / Natural / Smoked)	No	No	N/A
Dextrose	No	No	N/A
other Seeds and Seed Derivatives (Poppy Seeds, Cotton Seeds, Sunflower Seeds)	No	No	N/A
Kiwi fruit	No	No	N/A
Polyols (sugar alcohols)	No	No	N/A
grape fruit	No	No	N/A
Sorbic Acid (E200, E203)	No	No	N/A
Any other Preservatives	No	No	N/A
Ethanol	Yes	Yes	Yes, Used In Process
Honey	No	No	N/A
Lactose	No	No	N/A
Yeast and Yeast Derivatives	No	No	N/A
All Animal Products (Beef, Pork, Poultry or other) and Derivatives (which may include growth/yield hormones, antibiotics etc.)	Yes	Yes	Yes, Natural Shrimp And Crab Shell
Bovine Products or Derivatives (which may include growth/yield hormones, antibiotics etc.)	No	No	N/A

Product Code: P0716

Version: 6

Page 3 of 6



FDA number: 16806073982

+44 (0) 1353 667258 | [www.c-c-l.com](http://www.c-c-l.com) | [info@c-c-l.com](mailto:info@c-c-l.com)

Registered in England No: 3590758 VAT No: GB 711 6598 32

Registered office: 203 Lancaster Way Business Park, Ely, Cambridgeshire, CB6 3NX, UK.

## Statements

<b>Confirmation of BSE / TSE Status</b> This is to certify that this product complies with all relevant current UK and EU Legislative requirements in regard to Transmissible Spongiform Encephalopathies (TSE) and Bovine Spongiform Encephalopathy (BSE) for human food, and so is free of TSE/BSE.	Yes
This is also to certify that, during the course of their manufacture, the above-mentioned product did not come into contact with any materials, which could be derived from TSE/BSE risk materials.	Yes
<b>Confirmation of GM Status</b> This is to certify that this product is not manufactured from GM raw materials and is therefore not subject to labelling under current regulations.	Yes
<b>Confirmation of Non-Irradiation Status</b> This is to certify that this product, whole or in part, has not been subjected to Ionising Radiation as per European Directives.	Yes
<b>Confirmation of Nandrolone Status</b> This is to certify that this product, whole or in part, has not come into contact with Nandrolone or any of its precursors in any way.	Yes
<b>Confirmation of IOC Product Status</b> This is to certify that this product, whole or in part, has not come into contact with any product/s, which is banned by the IOC (International Olympics Committee) and or WADA.	Yes
<b>Confirmation of Animal Testing Status</b> This is to certify that all the products sold by Cambridge Commodities have not been tested on animals in any part of its manufacture in accordance with current regulations.	Yes
<b>Confirmation of Pesticides Status</b> This is to certify that the above-mentioned product complies with the EU max residue limits (MRLs) on pesticides.	Yes
<b>Confirmation of Nanoparticles Status</b> This is to certify that unless otherwise stated, the above-mentioned product is free of nanoparticles. Commission Recommendation, defines as follows: "Nanomaterial" means a natural, incidental or manufactured material containing particles, in an unbound state or as an aggregate or as an agglomerate and where, for 50 % or more of the particles in the number size distribution, one or more external dimensions is in the size range 1 nm - 100 nm".	Yes
<b>Packaging Status</b> We hereby certify that the packaging used in the above-mentioned material conforms to EU regulations and subsequent amendments on food grade packaging	Yes
<b>Confirmation of PAH status</b> This is to certify that the above-mentioned product complies with the max PAH limits set by the EU regulations	Yes

Product Code: P0716

Version: 6

Page 4 of 6



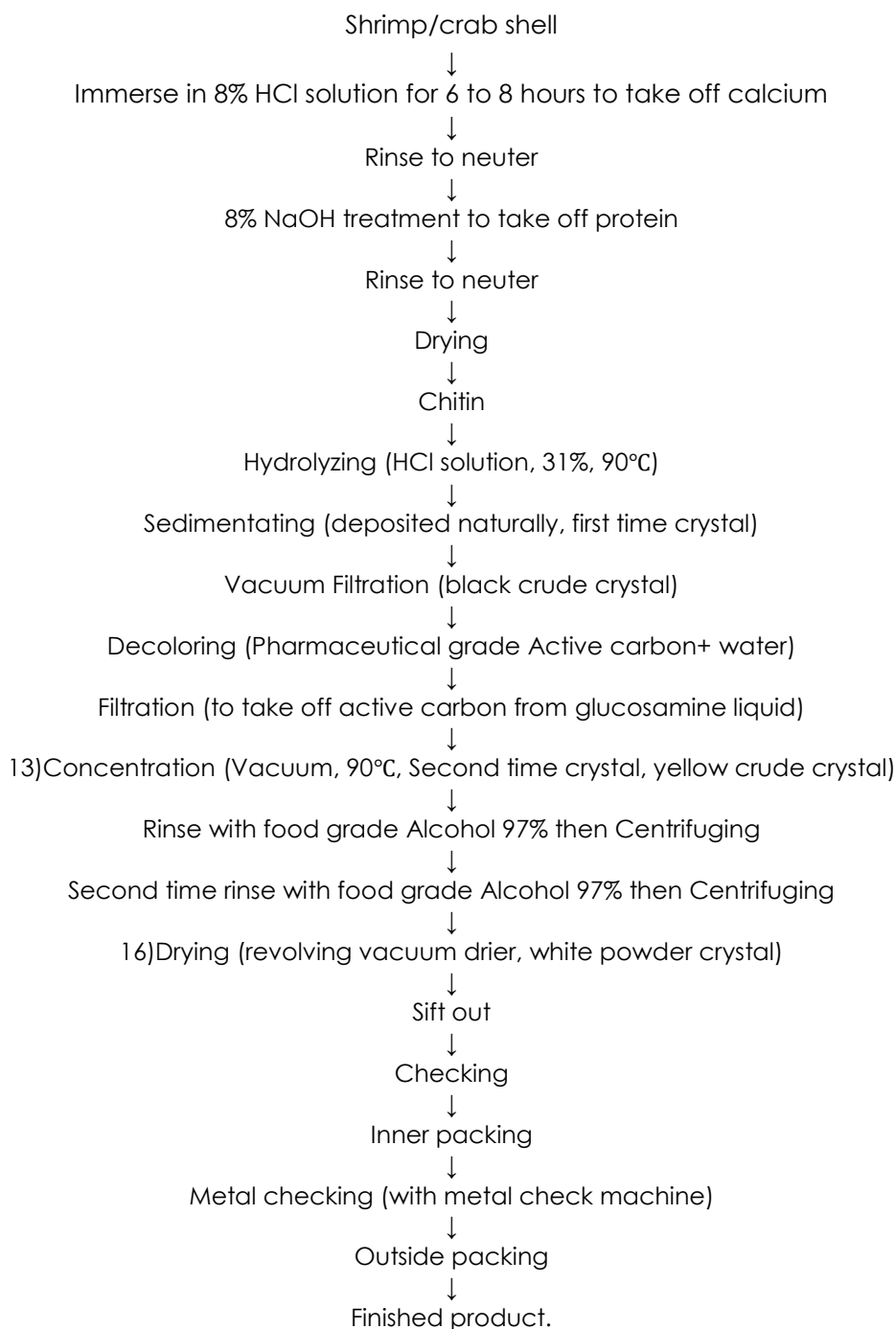
FDA number: 16806073982

+44 (0) 1353 667258 | [www.c-c-l.com](http://www.c-c-l.com) | [info@c-c-l.com](mailto:info@c-c-l.com)

Registered in England No: 3590758 VAT No: GB 711 6598 32

Registered office: 203 Lancaster Way Business Park, Ely, Cambridgeshire, CB6 3NX, UK.

## Product Flow Chart



## Material Safety Data Sheet

To download this product's material safety data sheet, please click [here](#) and search for the Cambridge Commodities product code. If there is no MSDS available, please follow the on-screen instructions to request one.

The Information provided in this document is subject to change and the batch specific certificate of analysis should always be referenced.

To be used as per local legislation.

### Change History

Version	Change	Customer Notification required Yes / No
1	First Issue	N/A
2	The format has been updated.	No
3	Added FEMAS status	No
4	Molecular Formula amended as a clerical error was made. Molecular structure, flow chart, glucosamine content and heavy metals added. Complies with the French Arrêté 26 September 2016 list of substances authorized in food supplements.	Yes
5	Removed Feed Materials Assurance Scheme from FEMAS status.	No
6	General reformat Added technical information Updated production flowchart. Changed E. coli from negative to negative/1g Changed salmonella from negative to negative/10g	Yes

### Document Approval

Originator	Approver

Product Code: P0716

Version: 6

Page 6 of 6



FDA number: 16806073982

+44 (0) 1353 667258 | [www.c-c-l.com](http://www.c-c-l.com) | [info@c-c-l.com](mailto:info@c-c-l.com)

Registered in England No: 3590758 VAT No: GB 711 6598 32

Registered office: 203 Lancaster Way Business Park, Ely, Cambridgeshire, CB6 3NX, UK.