

Product Technical Dossier

| | |
|------------------|---------------------------|
| Product | Elderberry Powder AD 100% |
| CCL Product Code | P05055 |

Specification Details

| | Specification |
|-------------------------|-------------------------|
| Identification | Positive |
| Appearance | Powder |
| Colour | Red/Purple |
| Aroma | Characteristic |
| Flavour | Characteristic |
| Sieve Analysis % passed | Min 95% through 80 Mesh |
| Loss on Drying | Max 10% |
| Ash | Max 5% |

Microbiological Limits

| | |
|-----------------------|------------------|
| Total Viable Count | Max 100,000cfu/g |
| Yeasts & Moulds | Max 10,000cfu/g |
| E. coli | Absent |
| Salmonella | Absent |
| Staphylococcus aureus | Absent |

Heavy Metal Limits

| | |
|--------------------|------------|
| Total Heavy metals | Max 10ppm |
| Lead (Pb) | Max 2ppm |
| Cadmium (Cd) | Max 1ppm |
| Mercury (Hg) | Max 0.1ppm |
| Arsenic (As) | Max 2ppm |



Additional Technical Information

| | |
|---|--|
| Raw Material Full Botanical / Chemical Name | <i>Sambucus nigra L.</i> |
| Plant Part Used | Fruit |
| The material is Food Grade | Yes |
| Extract Ratio | 1:1 |
| Solvent Used | Water |
| Cultivated / Wild | Cultivated |
| Harvest Method | Mechanical |
| Harvest Period | Aug - Oct |
| Harvest Stage (age of the plant) | More than three to five years |
| Country of Origin | China |
| Country of Manufacture | China |
| Shelf Life from Date of Manufacture | Min 2 Years |
| Suitable for Vegetarians? | Yes |
| Suitable for Vegans? | Yes |
| Storage Conditions | This material is to be stored in a tightly sealed bag/container and to be kept in a cool place away from moisture and direct sunlight. |

Composition Origin, Function and Percentages

| Ingredients | Function | % | Source |
|-------------------------|----------|------|---------------------------------------|
| Elderberry Fruit Powder | - | 100% | Fruit of the <i>Sambucus nigra L.</i> |

Nutritional Data

| Test | Value per 100g |
|-------------------------|-------------------|
| Energy kJ / Kcal | 1386kJ/ 334kcal |
| Fat (g) | 12g (± 2g) |
| -Of which Saturates (g) | 1g (± 0.5g) |
| Carbohydrate (g) | 28g (± 2g) |
| -Of which Sugars (g) | 13g (± 1g) |
| Fibre (g) | >35g |
| Protein (g) | 10g (± 2g) |
| Salt (g) | 0.015g (± 0.005g) |

Please note that surveillance testing may mean that not all the parameters stated on this specification are tested for every batch.

The allergen information is supplied by the manufacturer, we have not tested for each individual allergen to ensure they are not present. The information given is based on a documented risk assessment and is accurate to the best of our knowledge. If you intend to make a voluntary "free from" claim on your pack, additional testing may need to be carried out. For technical and labelling guidance, you should always speak to the competent authority for the market or member state in which the final products are placed.



Allergens and Food Intolerances

| Allergens | Product Contains YES/NO | Handled at Manufacture site YES/NO | Please see risk rating A to E listed below |
|---|-------------------------|------------------------------------|--|
| Peanuts and Peanut Derivatives (including possible cross contamination) | No | No | F |
| Nut and Nut Derivatives <i>Almond (Amygdalus communis L.), Hazelnut (Corylus avellana), Walnut (Juglans regia), Cashew (Anacardium occidentale), Pecan nut (Carya illinoensis (Wangenh.) K. Koch), Brazil nut (Bertholletia excelsa), Pistachio nut (Pistacia vera), Macadamia nut and Queensland nut (Macadamia ternifolia)</i> | No | No | F |
| Sesame Seeds and Sesame Seed Derivatives | No | Yes | E |
| Milk and Milk Derivatives (including lactose) | No | No | F |
| Egg and Egg Derivatives | No | No | F |
| Cereals and Derivatives containing OR POTENTIALLY CONTAMINATED WITH Gluten <i>(wheat, wheatgrass, furo, freekeh, spelt, kamut, rye, oats, barley, barleygrass)</i> | No | No | F |
| Soya and Soya Derivatives | No | No | F |
| Lupin and Lupin Derivatives | No | No | F |
| Mustard and Mustard Derivatives | No | No | F |
| Celery or Celery Derivatives (including Celeriac) | No | No | F |
| Fish and Fish Derivatives | No | No | F |
| Molluscs and their Derivatives | No | No | F |
| Crustaceans and their Derivatives | No | No | F |
| Sulphur Dioxide and Sulphites (E220, E228) at levels > 10mg/kg or 10mg/litre | No | No | F |

A - Risk of contact at source during harvesting and may contain traces

B - Raw material handled on same line as other allergenic materials and may contain traces

C - Raw material handled on same line as other allergenic materials however formal control programme in place to minimise cross contact risk

D - Exempt from labelling according to EU regulations

E - Not handled on the same line

F - Not handled at manufacture site and therefore no risk of cross contamination

Product Code: P05055

Version: 2

Page 3 of 7

**Committed to meeting quality standards. BRC Food Safety . FEMAS . FSMA . Informed Manufacturer. Soil Association
Organic . Halal . Kosher .**

For a full range of our accreditations visit www.cambridgecommodities.com/quality-accreditations/certificates



+44 (0) 1353667258 | www.cambridgecommodities.com | enquiries@cambridgecommodities.com

| Additives / Contaminants / Dietary Requirements / Intolerances | Product Contains YES/NO | Handled at Manufacture site YES/NO | Please see risk rating A to E listed below |
|--|-------------------------|------------------------------------|--|
| Additives / E Numbers | No | No | F |
| Antioxidants | No | No | F |
| Ethylene Oxide | No | No | F |
| Gelatine | No | No | F |
| Flavourings (Artificial / Nature Identical / Natural / Smoked) | No | No | F |
| Maize / Corn and any Derivatives | No | Yes | E |
| Legumes / Pulses | No | No | F |
| Rice and Rice Derivatives | No | No | F |
| Added Salt | No | No | F |
| Added Sugar / artificial or natural sweeteners | No | No | F |
| Aspartame | No | No | F |
| BHA / BHT (E320 / E321) | No | No | F |
| Caffeine | No | No | F |
| Colours (Artificial / Nature Identical / Natural / Smoked) | No | No | F |
| Dextrose | No | No | F |
| Other Seeds and Seed Derivatives (Poppy Seeds, Cotton Seeds, Sunflower Seeds) | No | No | F |
| Fruits (Kiwi fruit, orange, banana, apple, peach) | No | No | F |
| Polyols (sugar alcohols) | No | No | F |
| Grapefruit | No | No | F |
| Sorbic Acid (E200, E203) | No | No | F |
| Any other Preservatives | No | No | F |
| Ethanol | No | Yes | E |
| Honey | No | No | F |
| Lactose | No | No | F |
| Yeast and Yeast Derivatives | No | No | F |
| All Animal Products (Beef, Pork, Poultry or other) and Derivatives (which may include growth/yield hormones, antibiotics etc.) | No | No | F |
| Bovine Products or Derivatives (which may include growth/yield hormones, antibiotics etc.) | No | No | F |
| Matsutake mushroom and Derivatives | No | No | F |
| Yam and Derivatives | No | No | F |
| Buckwheat and Derivatives | No | No | F |
| Palm Oil and Derivatives | No | No | F |
| Coconut and Derivatives | No | No | F |

A - Risk of contact at source during harvesting and may contain traces

B - Raw material handled on same line as other allergenic materials and may contain traces

C - Raw material handled on same line as other allergenic materials however formal control programme in place to minimise cross contact risk

D - Exempt from labelling according to EU regulations

E - Not handled on the same line

F - Not handled at manufacture site and therefore no risk of cross contamination

Product Code: P05055

Version: 2

Page 4 of 7

**Committed to meeting quality standards. BRC Food Safety . FEMAS . FSMA . Informed Manufacturer. Soil Association
Organic . Halal . Kosher .**

For a full range of our accreditations visit www.cambridgecommodities.com/quality-accreditations/certificates



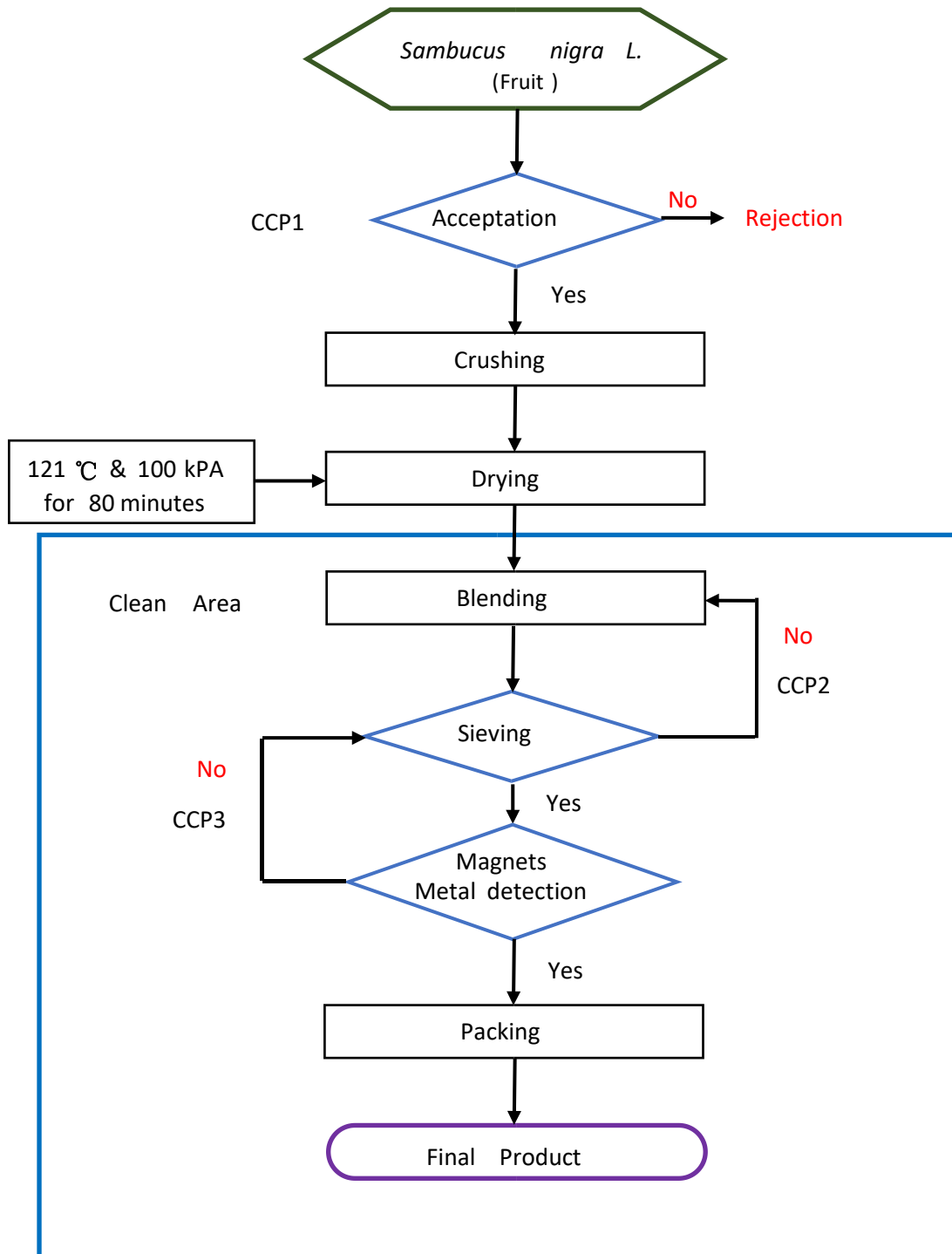
+44 (0) 1353667258 | www.cambridgecommodities.com | enquiries@cambridgecommodities.com

Compliance Statements

| | |
|--|-----|
| <p>Confirmation of BSE / TSE Status This product complies with all relevant current UK and EU Legislative requirements in regard to Transmissible Spongiform Encephalopathies (TSE) and Bovine Spongiform Encephalopathy (BSE) for human food, and so is free of TSE/BSE.</p> | Yes |
| <p>Confirmation of GM Status This product is not manufactured from GM raw materials and is therefore not subject to labelling under current regulations.</p> | Yes |
| <p>Confirmation of Non-Irradiation Status This product, whole or in part, has not been subjected to Ionising Radiation as per European Directives.</p> | Yes |
| <p>Confirmation of IOC Product Status This product, whole or in part, has not come into contact with any product which is banned by the IOC (International Olympics Committee) and/or WADA.</p> | Yes |
| <p>Confirmation of Animal Testing Status This product has not been tested on animals in any part of its manufacture in accordance with current regulations.</p> | Yes |
| <p>Confirmation of Pesticides Status This product complies with the EU max residue limits (MRLs) on pesticides.</p> | Yes |
| <p>Confirmation of Nanomaterial Status This product does not contain nanomaterials as per relevant EU regulations.</p> | Yes |
| <p>Confirmation of Food Grade Packaging The packaging used in this product conforms to EU regulations and subsequent amendments on food grade packaging</p> | Yes |
| <p>Confirmation of Pyrrolizidine Alkaloids (PA) status This product complies with the PA limit set by the EU regulations</p> | Yes |
| <p>Confirmation of Contaminants status This product complies with Commission Regulation (EC) No 1881/2006 wherever applicable</p> | Yes |



Product Flow Chart



Material Safety Data Sheet

To download this product's material safety data sheet, please click [here](#) and search for the Cambridge Commodities product code. If there is no MSDS available, please follow the on-screen instructions to request one.

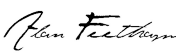

The Information provided in this document is subject to change and the batch specific certificate of analysis should always be referenced.

To be used as per local legislation.

Change History

| Version | Change | Customer Notification required Yes / No |
|---------|---|---|
| 1 | Changed from V2 Specification to V1 Technical Dossier | Yes |
| 2 | Amended loss on drying from Max 5% to max 10%, Lead from Max 3ppm to Max 2ppm | Yes |

Document Approval

| Originator | Approver |
|---|---|
|  Alan Feetham QC Technician <small>x 22/03/2024 16:41</small> |  Ash Bayne Senior Quality Specialist <small>x 25/03/2024 12:32</small> |

